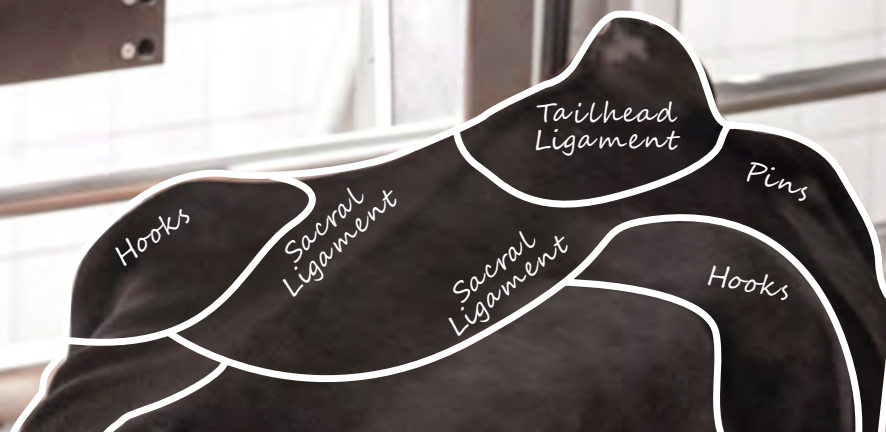


Introducing DeLaval body condition scoring BCS. Daily, automatic scoring of your cows.

MANAGED BY
DELPRO™
FARM
MANAGER

The DeLaval BCS system:

- Delivers daily, consistent and accurate scoring
- Individual, group, and herd overview
- Helps to indicate metabolic diseases
- Non stressful on the cows



Why is body condition scoring important?

Body condition scores are often used as a critical measure of how effective feeding is on a farm. Therefore it needs to be done accurately and at specific times in the lactation cycle. If you know the body condition score of your cows you can plan your feeding to ensure they have adequate body fat reserves, which promotes milk production, reproductive efficiency and cow longevity.

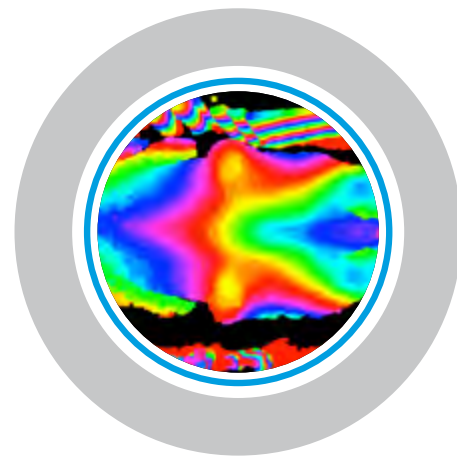


How has body condition scoring been measured in the past?

Traditionally, body condition scoring is done by looking at a cow and feeling it. This can lead to inaccuracies, particularly if the barn is crowded. Body condition scoring is more accurate than weighing. Body weight varies a lot with feed and water intake.

New method of body condition scoring

The DeLaval body condition scoring BCS system does away with the guesswork and the inaccuracies of manual body condition scoring. It automatically measures the body condition score of every cow in your herd on a daily basis, while they are on the move in the barn.



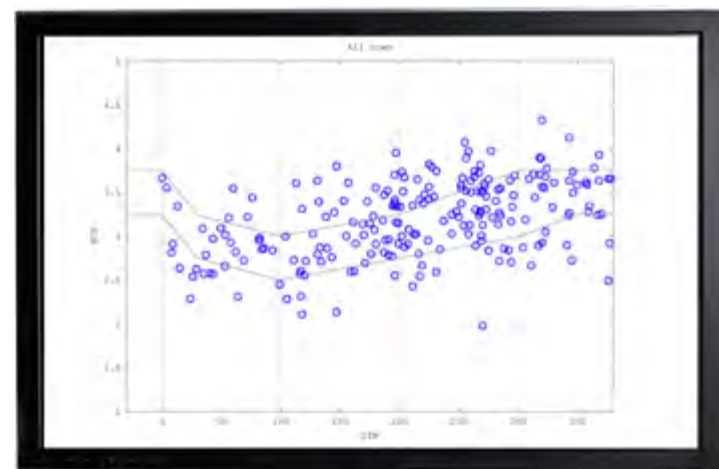
3D view produced by the BCS camera

The BCS system – a revolution in body condition scoring

The BCS camera is mounted on a DeLaval sort gate or a voluntary milking system, VMS. It takes a 3D image of a cow's lower back as it passes under the camera. The image is then analyzed with the unique DeLaval BCS software to determine the amount of fat covering the loin, rump tailhead, hooks, pins and short ribs. From this the BCS system can accurately calculate the body condition score of the cow.

Managed by DelPro

The cow's score is sent to DelPro Farm Manager where it is logged for viewing at anytime from your farm computer. Individual, group and herd information is presented in easy to read graph formats. DelPro Farm Manager can also be set to send a notification if a cow falls below a certain score. This allows a dairy producer to manage and make choices by exception.



Herd Graph - BCS, DIM

An overview of the condition of your herd can be viewed in DelPro at any time.

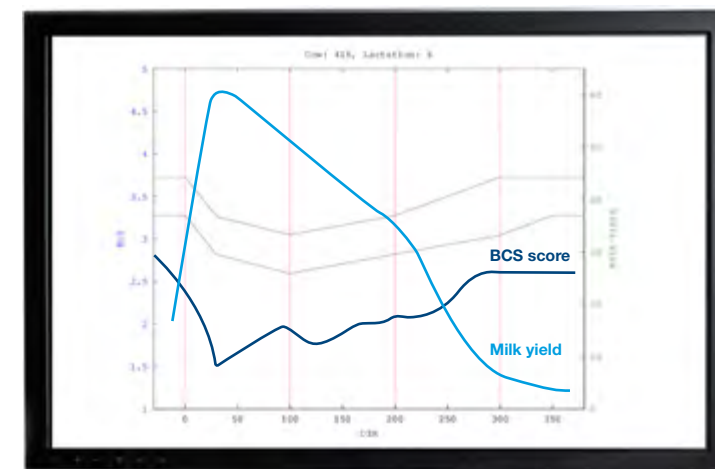


BCS key features:

- Daily body condition scores of all milking cows
- Consistent method used to score cows
- Eliminates stress for cows when scoring
- Provides automated reports regarding health deviations
- Scores can be shared with vets and nutritionists

BCS is a great day-to-day help. I can quickly see if a cow is outside her optimal condition and change her feeding - something that I haven't managed to do as effectively in the past. BCS contributes to healthier, more productive cows and saves on feed costs.

Michael Arvidsson
Lövänget Farm
2 VMS and Smart Selection Gate



Individual Graph - BCS, DIM, Milk Yield

Individual cow graphs enable you to see the body condition score and act on it accordingly.

For more information

DeLaval Inc.

11100 North Congress Avenue
Kansas City, MO 64153

Tel (816) 891-7700

Fax (816) 891-1606

DeLaval Inc.

3000 Lakeside Drive
Suite 305 South
Bannockburn, IL 60015

usa.info@delaval.com

www.delaval-us.com

The main benefits with DeLaval body condition scoring BCS

Precise feeding

With regular updates of your cow's body condition scores you can plan and optimise feeding to ensure your cows have the ideal body condition for the current stage in their lactation cycle.

Better cow health

Consistent and accurate scores act as an early warning system if a cow deviates from the ideal body condition score curve. Any deviations can be acted on sooner to reduce potential veterinarian and nutritional costs.

Improved breeding and calving

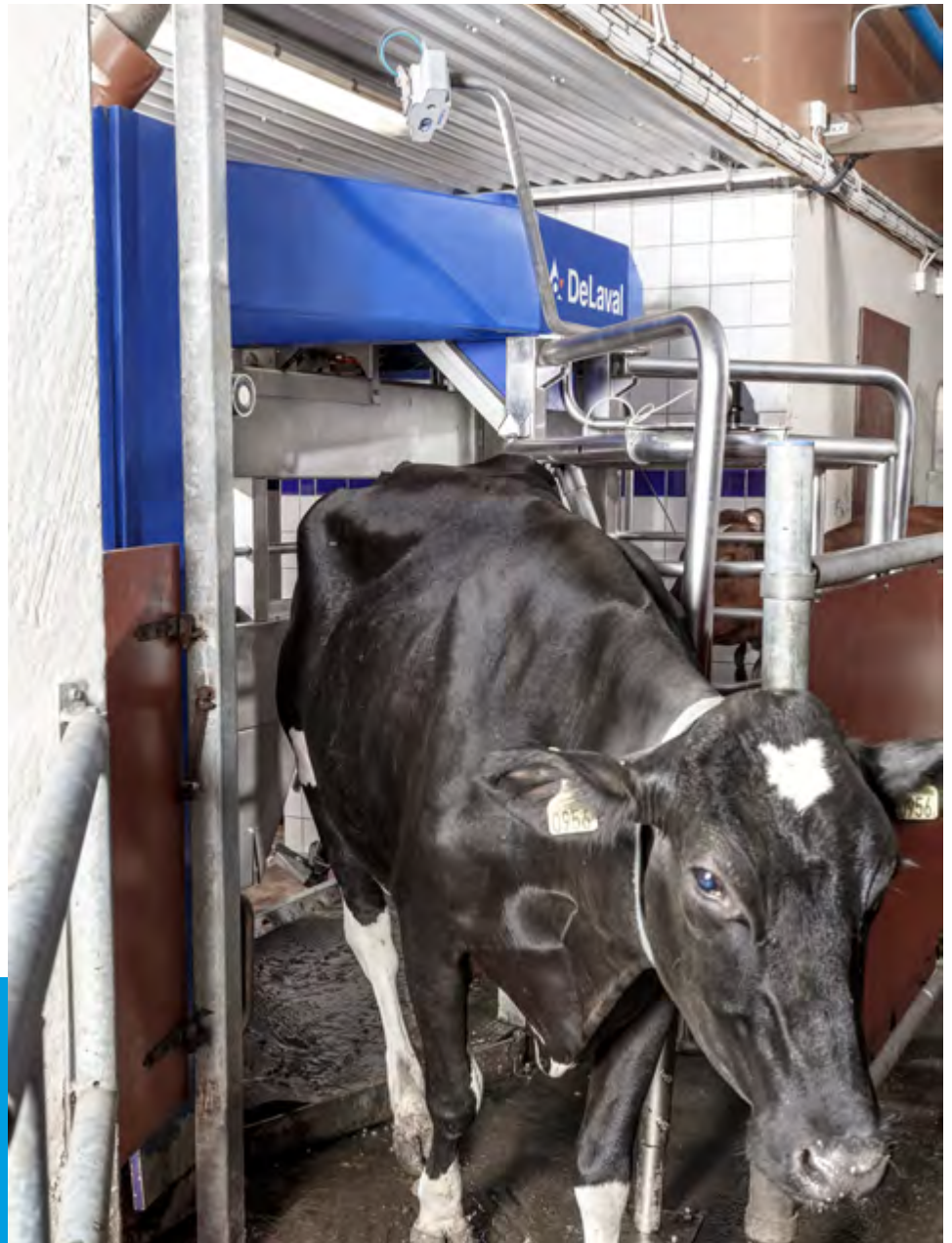
Regular score updates can be used to ensure cows have the ideal condition at insemination and calving. The right body condition throughout the pregnancy can help to reduce calving and post calving problems, while helping calves have an ideal start to life.

Increased milk production

Keeping your cows at the ideal condition during lactation will help ensure maximum milk yield. With regular updates you can ensure they follow the ideal body condition curve.

More time for other tasks

Automatic body condition scoring eliminates the need for manual scoring. This means you can use your time to carry out other important tasks on the farm.



Follow DeLaval



facebook.com/smartfarming



[@DeLavalUS](https://twitter.com/DeLavalUS)



[DeLavalfilms](https://www.youtube.com/DeLavalfilms)